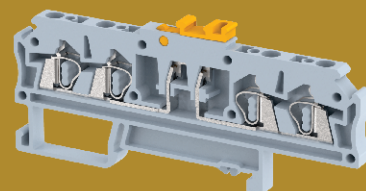
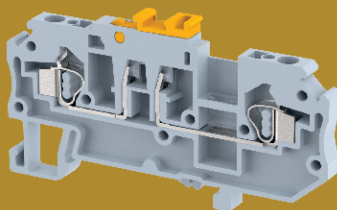
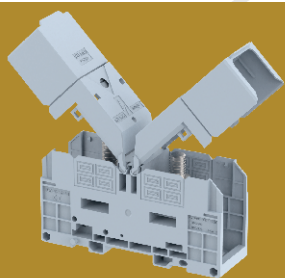




since 1963



Solutions for
Railways

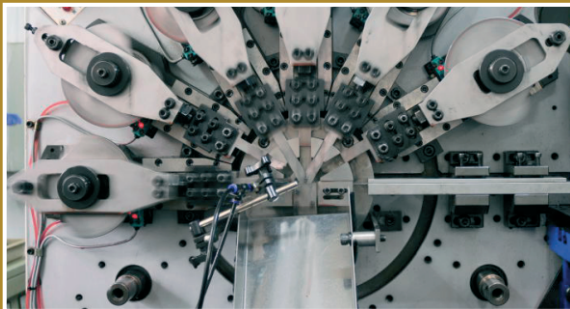
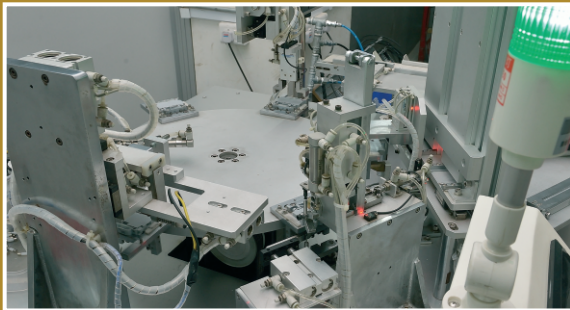
www.elmex.net



since 1963

'elmex' is a pioneer in the field of electrical wire termination technology in India, *'elmex'* started its journey in 1963 with the manufacturing of rail mounted Clip-On type Terminal Blocks for the Switchgear industry. *'elmex'* developed this product as import substitute item in INDIA, thus helping nation conserve foreign exchange which was then very scarce. Steered on by the vision our founder and Chairman, Mr. J D Ray, *'elmex'* has moved from strength to strength and is regarded as the leader in manufacturing Terminal Blocks in the country.

Converging Innovations Expanding Solutions



The steady and systematic growth coupled with the desire for incremental innovations, unfaltering customer service and steadily increasing manufacturing productivity has brought 'elmex' to its current level of competence. 'elmex' techno-economic competitiveness has led many multinationals to choose 'elmex' as a global sourcing partner. 'elmex' brand equity is reflected by the fact that we serve some of the biggest names from national and multinational companies such as ABB, Alstom, BHEL, GE, Hitachi, Honeywell, L&T, NTPC, Schneider Electric, Siemens and Yokogawa.

'elmex' is regarded as trustworthy and reliable partner when it comes to product quality, service efficiency and delivery schedules – all this is made possible because of commitment and competence of team 'elmex' and its desire for continuous improvement and innovations. 'elmex' manufacturing plants are ISO 9001:2015 for Quality Management System and ISO 14001:2015 for Environmental Management System certified by TUV SUD South Asia Pvt. Ltd. 'elmex' products also carry certification from Underwriter's Laboratories Inc. - USA & Canada, CSA Canada, UL international, Demko A/S – Denmark, Intertek SEMKO-Sweden, SGS Fimko – Finland and Nemko - Norway.



Solutions For
Connectivity



Solutions For
Solar Photovoltaic



Solutions For
Metering & Protection



Solutions For
Control & Instrumentation



Solutions For
Railways

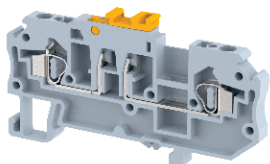


Solutions For
Oil & Gas Industry

For Signal & Telecom Applications

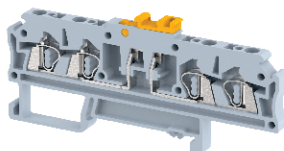
Disconnecting Terminal Blocks

DSDT 2.5



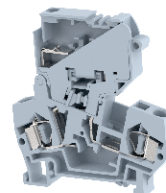
IEC 60947-7-1 : 1000 V/17.5 A/2.5 sq mm

DSDT 2.5 2X2



IEC 60947-7-1 : 1000 V/17.5 A/2.5 sq mm

DCF 4



IEC 60947-7-1 : 800 V/10 A/4 sq mm

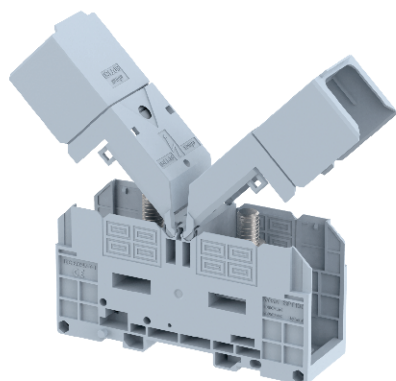
Ⓢ : 600 V/10 A/10-20 AWG

Available with LED Indication also

For Feeder Junction Box - Rolling Stock

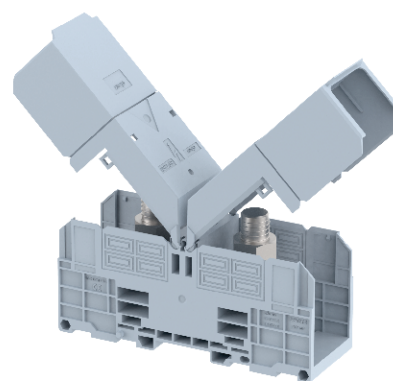
Bus Bar Terminal Blocks

SPT 150



IEC 60947-7-1 : 1000 V/320 A/150 sq mm

SPT 300

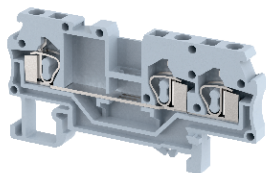


IEC 60947-7-1 : 1000 V/520 A/300 sq mm

For Locomotives

Multiple Output Terminal Blocks

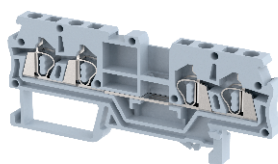
DST 2.5 - 1X2



CE

IEC 60947-7-1 : 800 V/24 A/2.5 sq mm

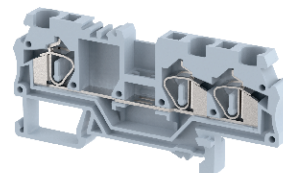
DST 2.5 - 2X2



CE

IEC 60947-7-1 : 1000 V/24 A/2.5 sq mm

DST 4 - 1X2



CE

IEC 60947-7-1 : 800 V/32 A/4 sq mm

Electrical Locomotive, EMU & Memu - Rolling Stock Application on Roof Top Pantograph

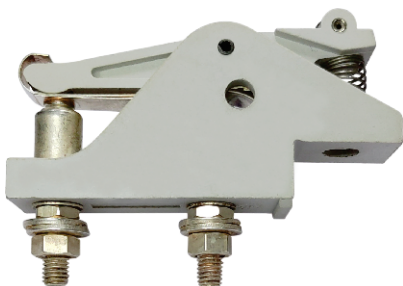
Fishbone Switch



Type	Fishbone
No. of Ways	6, 8, 9
Mechanical Life Cycle	1 Million Switching Ops.
Contact Pressure	125 gms. + 25 gms.
Continuous Current Carrying Capacity (Le)	10 ADC
Breaking Current	2 A at 125 VDC
Time Constant L/R	40 milli sec.
Di-Electric Strength	2.5 kV RMS for 60 sec.
Temperature Rise at 3A	< 5 C

Vacuum Circuit Breakers / Tap Changers

Auxiliary Cam Switch

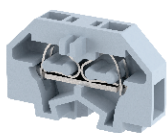


Type	Fishbone
Rated Voltage	220 V
Rated Continuous Current	20 ADC
Mechanical Life Cycle	1,00,000
Electrical Life Cycle	30,000
Contact Pressure	160 gms. to 260 gms.
Contact Gap	4.5 mm
Breaking Current	1 A at 110 VDC
Time Constant L/R	15 milli sec.
Di-Electric Strength	1.5 kV RMS for 60 sec.

For LED Based Lighting

Panel Mounted Terminal Blocks

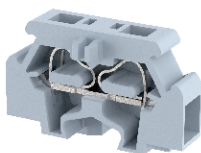
MCT 1.5



CE

IEC 60947-7-1 : 500 V/17.5 A/1.5 sq mm
UL : 300 V/10 A/16-22 AWG

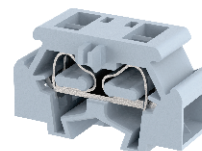
MCT 2.5



CE UL

IEC 60947-7-1 : 500 V/24 A/2.5 sq mm
UL : 300 V/15 A/14-22 AWG

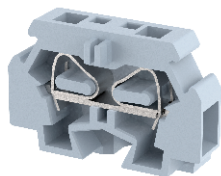
MCT 2.5P4



CE UL

IEC 60947-7-1 : 500 V/24 A/2.5 sq mm
UL : 300 V/15 A/14-22 AWG

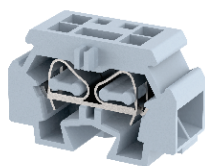
MCT 4



CE

IEC 60947-7-1 : 500 V/32 A/4 sq mm
UL : 300 V/20 A/12-20 AWG

MCT 4P4



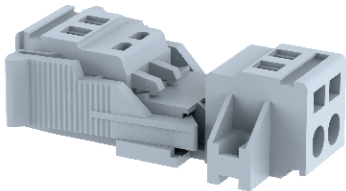
CE

IEC 60947-7-1 : 500 V/32 A/4 sq mm
UL : 300 V/20 A/12-20 AWG

For BLDC Fans

Plug and Socket Terminals

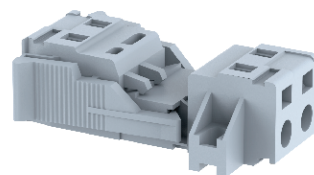
DPSC 5.08



(2W, 3W, 4W, 5W, 6W, 7W, 8W, 9W, 10W, 20W)

IEC 60947-7-1 : Male : 250 V/16 A/2.5 sq mm
Female : 250V/16A/2.5 sq mm

DPSC 7.5



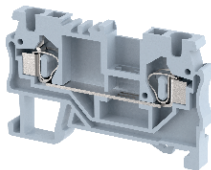
(2W, 4W, 6W, 8W)

IEC 60947-7-1 : Male : 400 V/16 A/2.5 sq mm
Female : 400V/16A/2.5 sq mm

For Switch Board Cabinet (SBC)

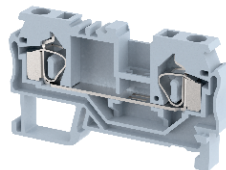
Feed Through Terminal Blocks

DST 2.5



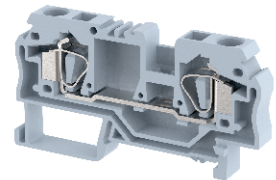
IEC 60947-7-1 : 800 V/24 A/2.5 sq mm
Ⓢ : 600 V/15 A/14-20 AWG

DST 4



IEC 60947-7-1 : 800 V/32 A/4 sq mm
Ⓢ : 600 V/20 A/12-20 AWG

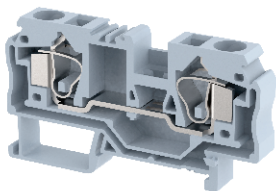
DST 6



IEC 60947-7-1 : 800 V/41 A/6 sq mm
Ⓢ : 600 V/25 A/10-20 AWG

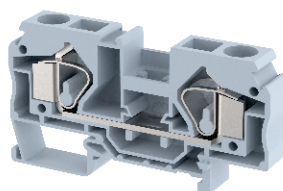
Feed Through Terminal Blocks

DST 10



IEC 60947-7-1 : 800 V/57 A/10 sq mm
Ⓢ : 600 V/50 A/8-16 AWG

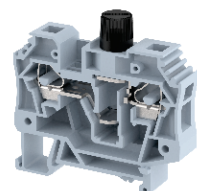
DST 16



IEC 60947-7-1 : 800 V/76 A/16 sq mm
Ⓢ : 600 V/65 A/6-16 AWG

Fuse Terminal Block

SCF 6



IEC 60947-7-1 : 800 V/10 A/6 sq mm

'elmex' Valued Customers



Western Railway



Schneider
Electric



IRCON
IRCON INTERNATIONAL LIMITED
(A Government of India Undertaking)



BOMBARDIER
the evolution of mobility

KALINDEE
RAIL NIGAM (ENGINEERS) LIMITED

HBL
HBL Power Systems Ltd

SIEMENS

AAL
Autometers Alliance Ltd

AMARA RAJA
Gotta be a better way

'elmex' Product Approvals in Railway

अअमासं RDSO
रेल अग्रदूत Transforming Railways
www.rdsso.indianrailways.gov.in



Elmex Controls Pvt. Ltd. | Elmex Electric Pvt. Ltd.

12, GIDC Estate, Makarpura, Vadodara -390010, Gujarat, India

☎ 0265-2642021 / 23

✉ marketing@elmex.net

🌐 www.elmex.net

'elmex' Railway January 2025



[in](#) ElmexControls | [f](#) ElmexControls | [t](#) ElmexControls | [i](#) ElmexControls | [v](#) ElmexControls

TECHNICAL SPECIFICATIONS MAY CHANGE IN LINE WITH TECHNICAL ADVANCES AND INDUSTRY STANDARDS.